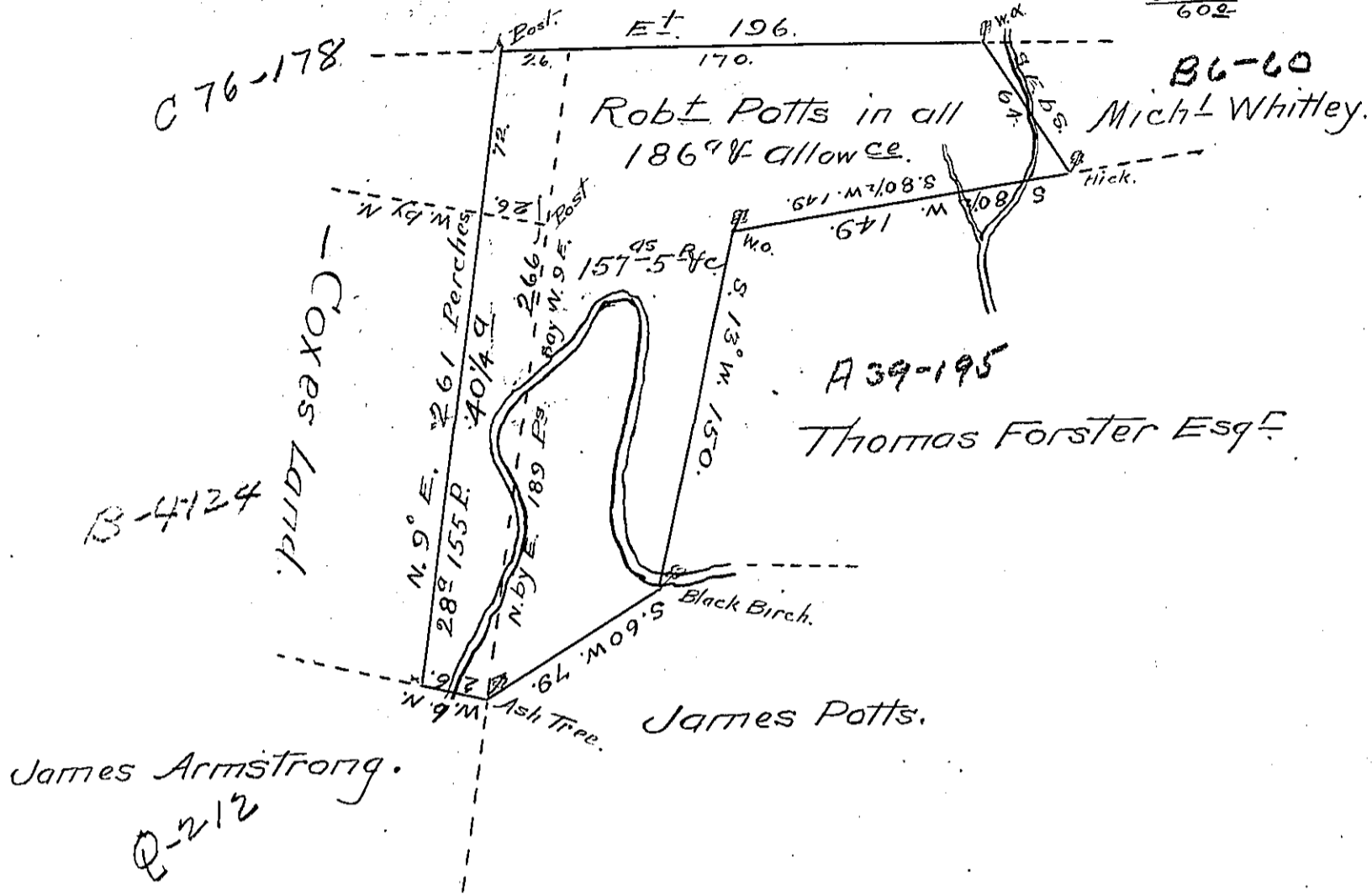


FORM NO. 1.

186
28-155
157-5.

189
26
1134
378
169.9
4914.0
3392
15220
13568
1061652
155
106
590
530
602

Robert Montgomery.



Survey'd to Robert Potts on the 29. day of August 1765 the above discribed tract of One Hundred Eighty Six acres of the Usual allowance of Six $\frac{1}{2}$ Ct. Situate in Paxton Town^r. Lancaster County By Warrant of the 15th. day of October 1744
 J Bartrem Galbraith Ds.

~~Mr Coxe by order of the Court Held at Lan^r the ___ day of ___ Ejected Potts from the 40 $\frac{1}{4}$ ^a. It being part of a Tract of 338^a formerly Granted to Simon Edgall & patented to Rebecca Edgall - 15 June 1767 T. L.~~

To John Lukens Esq^r
 Survr General

IN TESTIMONY that the above is a copy of the original remaining on file in the Department of Internal Affairs of Pennsylvania, made conformably to an Act of Assembly approved the 16th day of February, 1833, I have hereunto set my Hand and caused the Seal of said Department to be affixed at Harrisburg, this Third day of April 1906.

Isaac R. Brown
 Secretary of Internal Affairs.